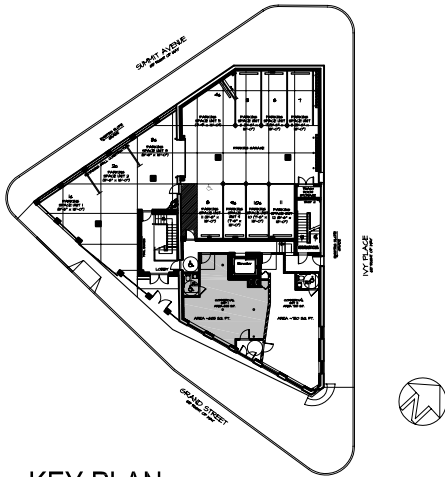
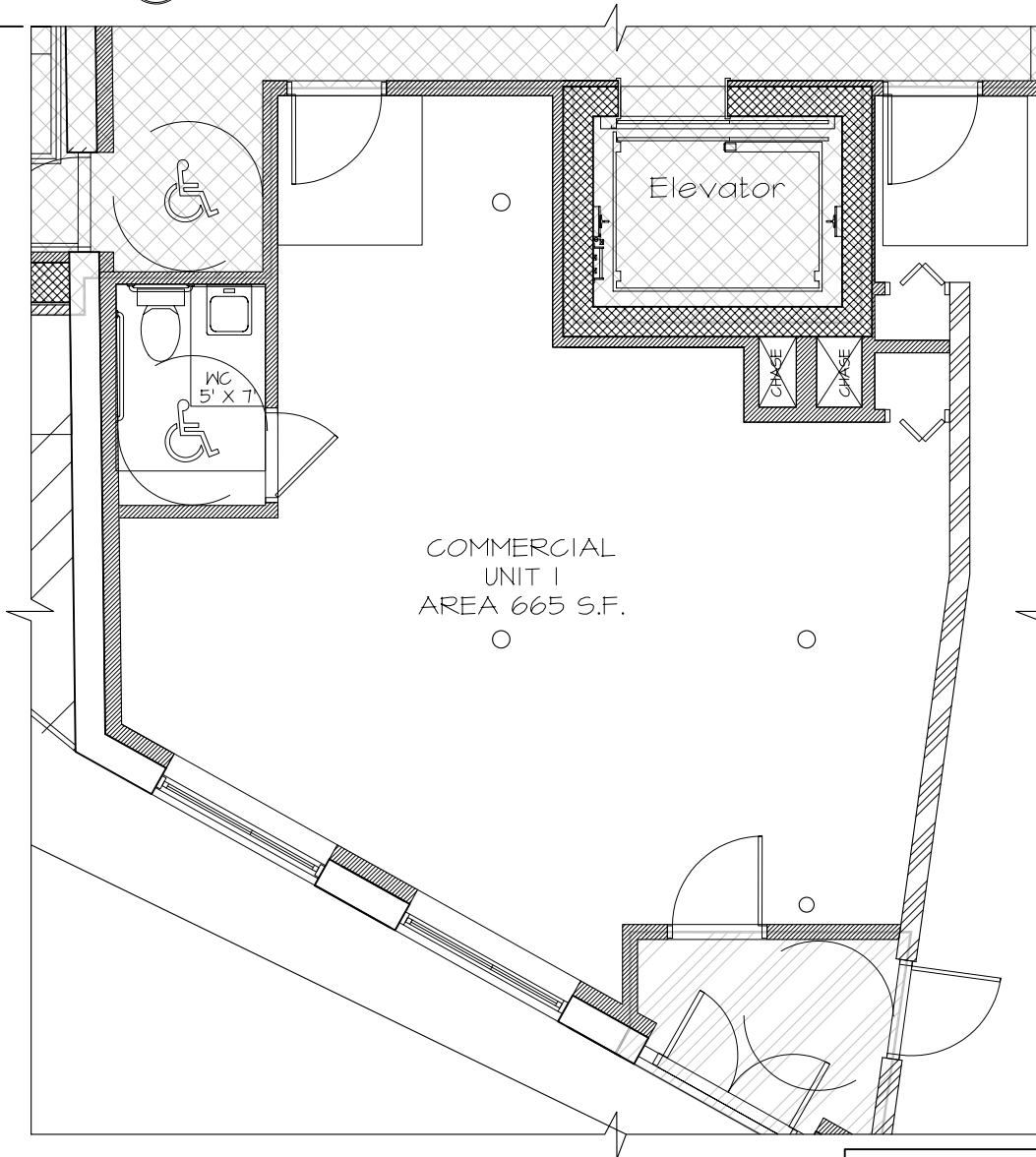


LIBRARY HALL, L.L.C.
704 GRAND STREET
JERSEY CITY, NJ





KEY PLAN
SCALE: N.T.S.



COMMERCIAL
UNIT 1
AREA 665 S.F.

DIMENSIONS, AREA CALCULATIONS, AND EXACT CONFIGURATIONS MAY DIFFER SLIGHTLY DUE TO FIELD VARIATIONS. PURCHASERS SHOULD VERIFY CONFORMITY BETWEEN REPRESENTED UNIT AND ACTUAL UNIT.

 LIM. ACCESS
COMMON AREA

 COMMON AREA
 LIVING AREA

1ST FLOOR
COMMERC. UNIT 1
AREA 665 S.F.

704 GRAND STREET, JERSEY CITY, NJ
Minervini - Vandermark
Architecture
~ 401 Jefferson Street, Hoboken NJ 07030 ~ Ph. 201.386.0637 Fax. 201.386.0628 ~

PROJECT # : 04-430
DRAWN BY : TP
DATE : 3/23/06

FRANK J. MINERVINI AIA
N.J. LICENSE NO. 12576
