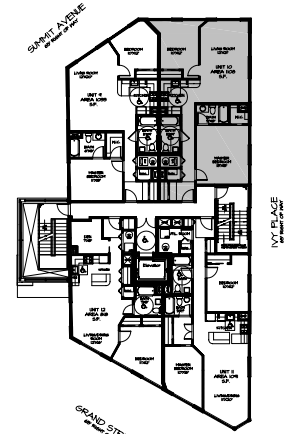
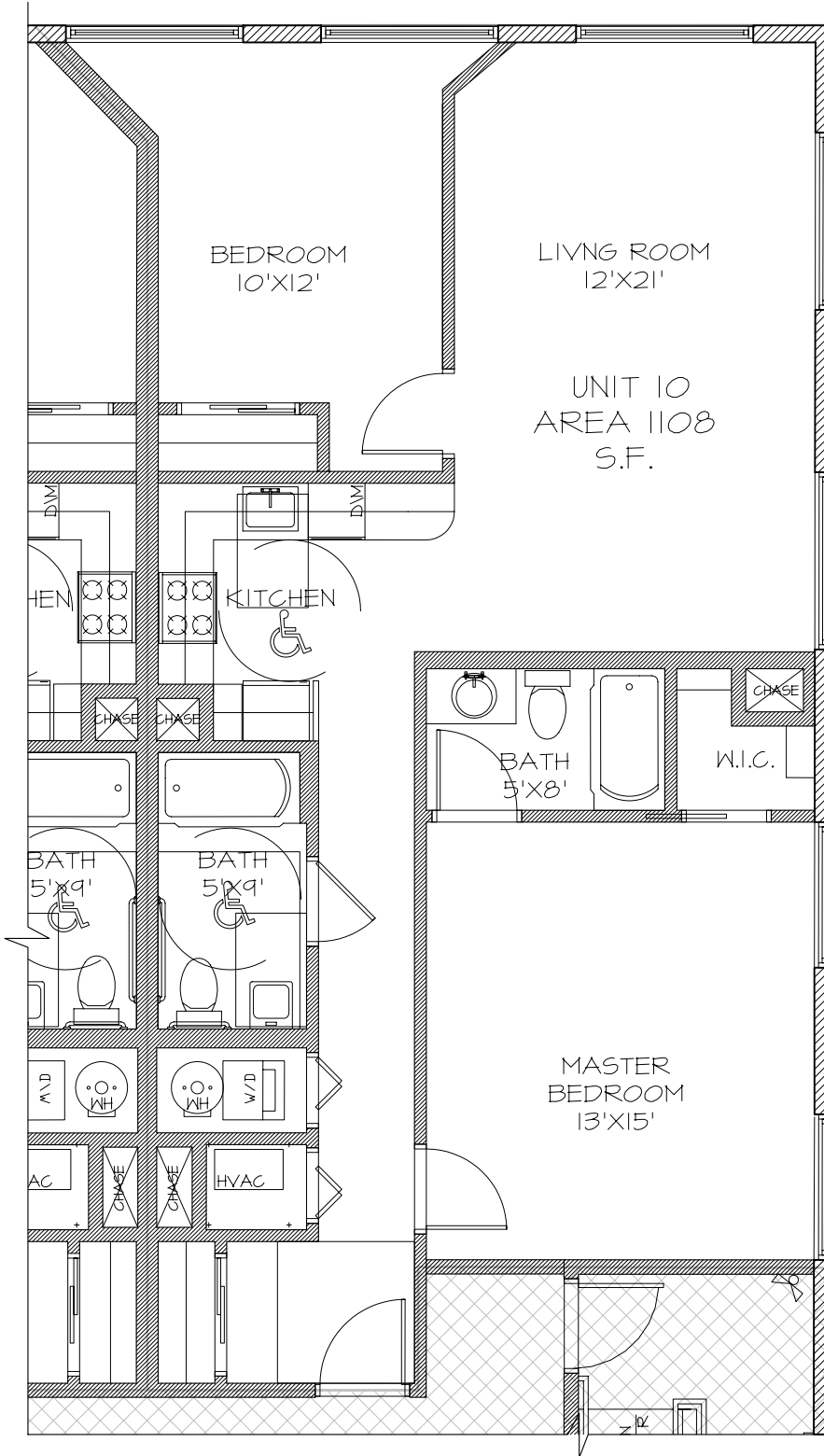


LIBRARY HALL, L.L.C.
704 GRAND STREET
JERSEY CITY, NJ

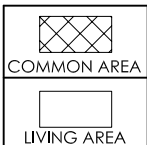


KEY PLAN
SCALE: N.T.S.



UNIT 10
SCALE: 1/8" = 1'-0"

DIMENSIONS, AREA CALCULATIONS, AND EXACT CONFIGURATIONS MAY DIFFER SLIGHTLY DUE TO FIELD VARIATIONS. PURCHASERS SHOULD VERIFY CONFORMITY BETWEEN REPRESENTED UNIT AND ACTUAL UNIT.



5TH FLOOR
UNIT 10
AREA 1108 S.F.

704 GRAND STREET, JERSEY CITY, NJ

Minervini - Vandermark
Architecture

~ 401 Jefferson Street, Hoboken NJ 07030 ~ Ph. 201.386.0637 Fax. 201.386.0628 ~

PROJECT # : 04-430
DRAWN BY : TP
DATE : 3/23/06

FRANK J. MINERVINI AIA
N.J. LICENSE NO. 12576