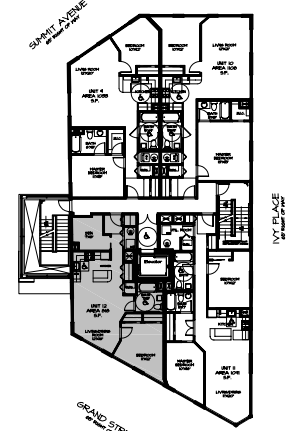
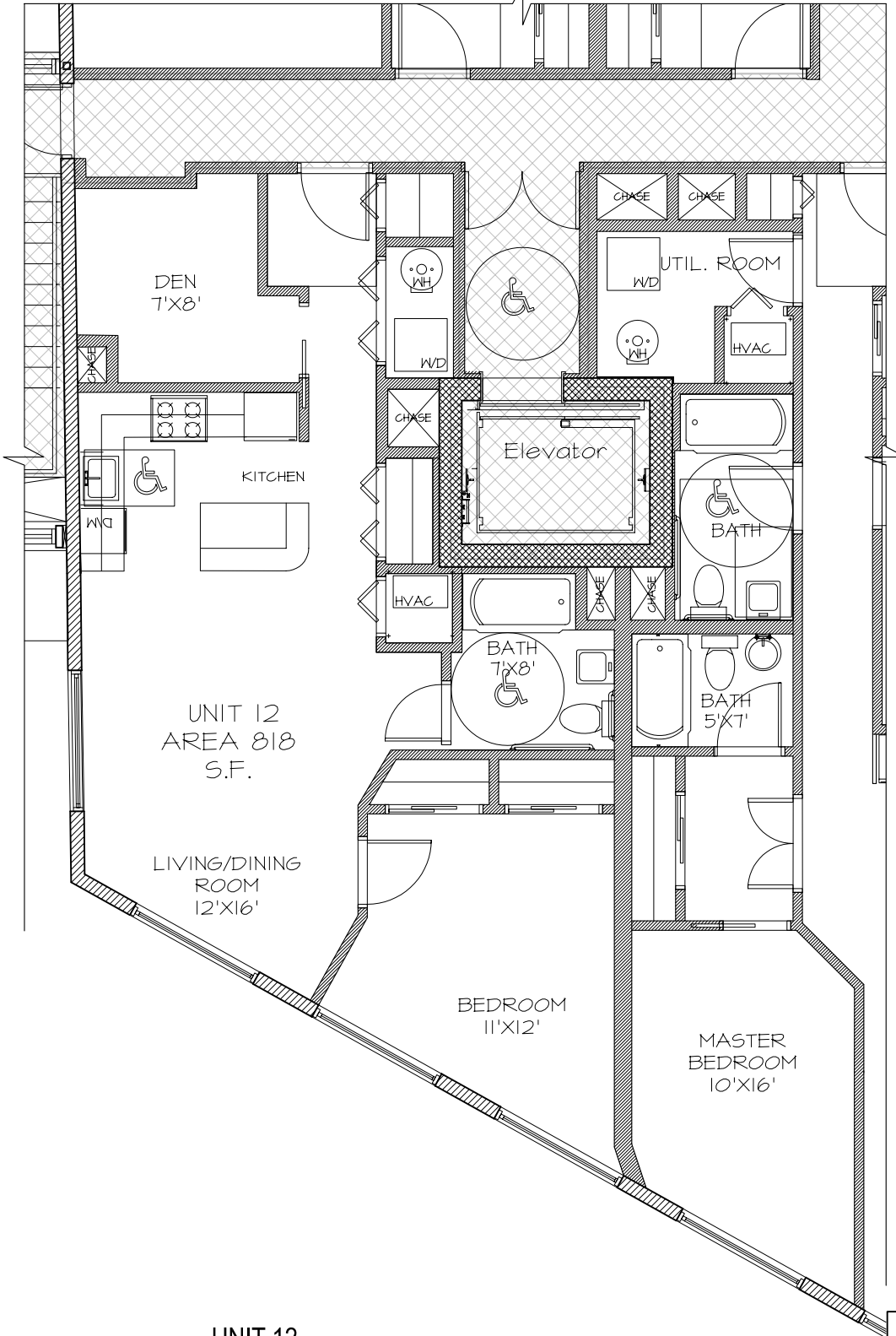


LIBRARY HALL, L.L.C.  
704 GRAND STREET  
JERSEY CITY, NJ



KEY PLAN  
SCALE: N.T.S.

UNIT 12  
AREA 818  
S.F.

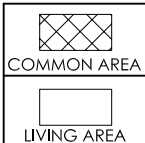
LIVING/DINING  
ROOM  
12'X16'

BEDROOM  
11'X12'

MASTER  
BEDROOM  
10'X16'

UNIT 12  
SCALE: 1/8" = 1'-0"

DIMENSIONS, AREA CALCULATIONS, AND EXACT CONFIGURATIONS MAY DIFFER SLIGHTLY DUE TO FIELD VARIATIONS. PURCHASERS SHOULD VERIFY CONFORMITY BETWEEN REPRESENTED UNIT AND ACTUAL UNIT.



5TH FLOOR
UNIT 12
AREA 818 S.F.

704 GRAND STREET, JERSEY CITY, NJ

**Minervini - Vandermark**  
Architecture

~ 401 Jefferson Street, Hoboken NJ 07030 ~ Ph. 201.386.0637 Fax. 201.386.0628 ~

PROJECT # : 04-430
DRAWN BY : TP
DATE : 3/23/06

FRANK J. MINERVINI AIA  
N.J. LICENSE NO. 12576