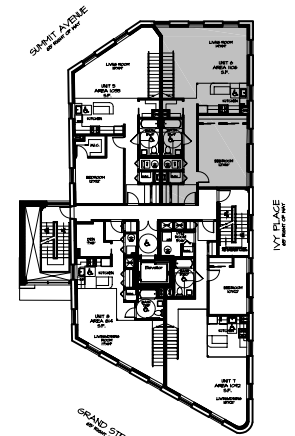
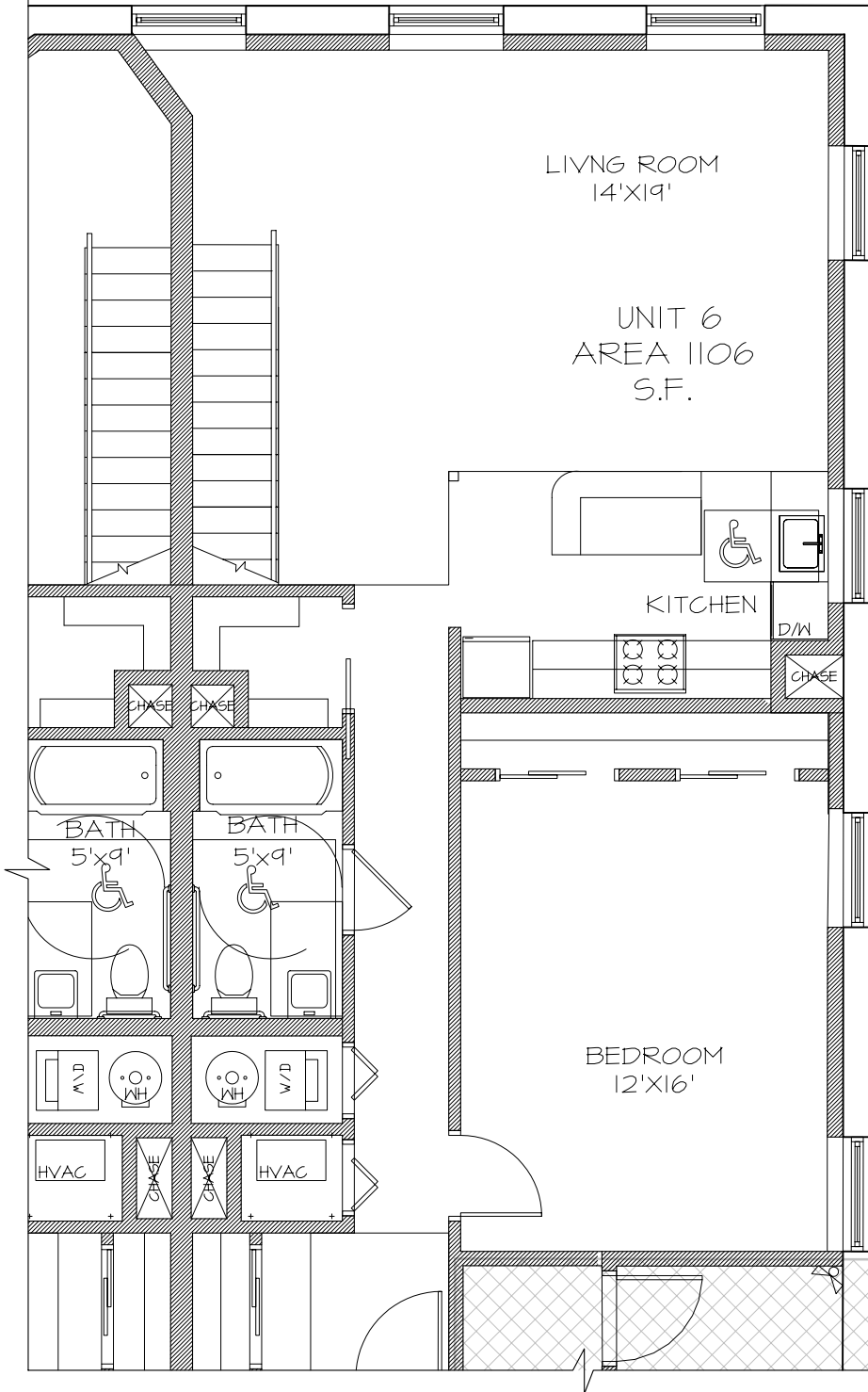


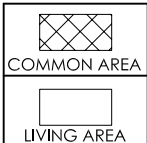
LIBRARY HALL, L.L.C.  
704 GRAND STREET  
JERSEY CITY, NJ



KEY PLAN  
SCALE: N.T.S.

UNIT 6  
SCALE: 1/8" = 1'-0"

DIMENSIONS, AREA CALCULATIONS, AND EXACT CONFIGURATIONS MAY DIFFER SLIGHTLY DUE TO FIELD VARIATIONS. PURCHASERS SHOULD VERIFY CONFORMITY BETWEEN REPRESENTED UNIT AND ACTUAL UNIT.



3RD FLOOR
UNIT 6
AREA 1106 S.F.

704 GRAND STREET, JERSEY CITY, NJ

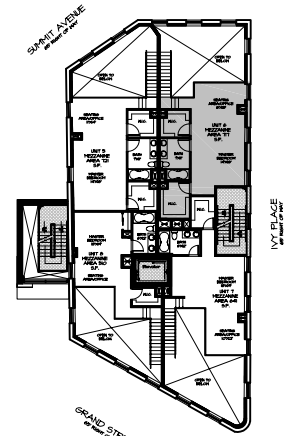
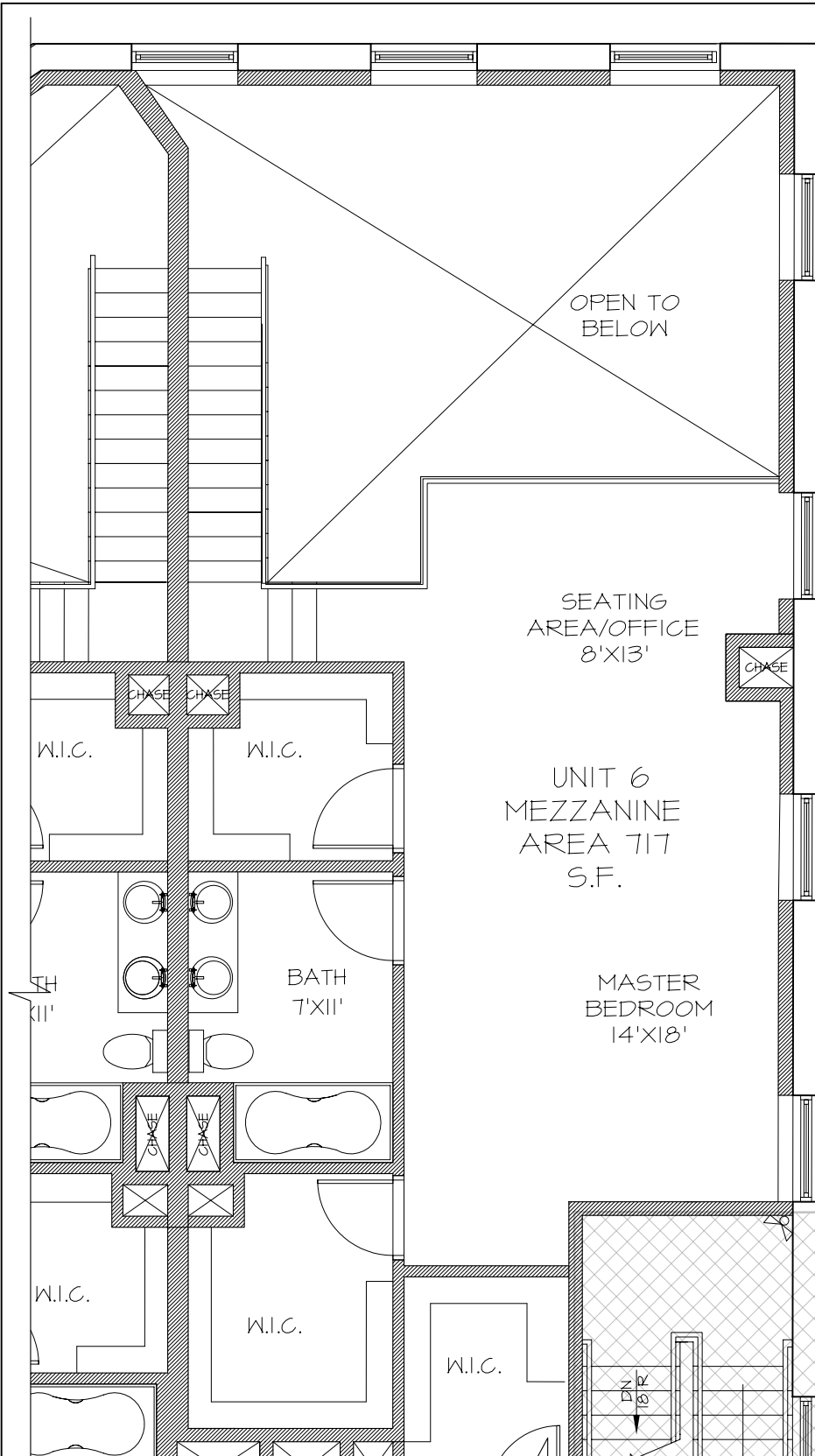
**Minervini - Vandermark**  
Architecture

~ 401 Jefferson Street, Hoboken NJ 07030 ~ Ph. 201.386.0637 Fax. 201.386.0628 ~

PROJECT # : 04-430
DRAWN BY : TP
DATE : 3/23/06

FRANK J. MINERVINI AIA  
N.J. LICENSE NO. 12576

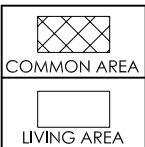
LIBRARY HALL, L.L.C.  
704 GRAND STREET  
JERSEY CITY, NJ



KEY PLAN  
SCALE: N.T.S.

UNIT 6  
SCALE: 1/8" = 1'-0"

DIMENSIONS, AREA CALCULATIONS, AND EXACT CONFIGURATIONS MAY DIFFER SLIGHTLY DUE TO FIELD VARIATIONS. PURCHASERS SHOULD VERIFY CONFORMITY BETWEEN REPRESENTED UNIT AND ACTUAL UNIT.



4TH FLOOR
UNIT 6 MEZZANINE
AREA 717 S.F.

704 GRAND STREET, JERSEY CITY, NJ

**Minervini - Vandermark**  
Architecture

~ 401 Jefferson Street, Hoboken NJ 07030 ~ Ph. 201.386.0637 Fax. 201.386.0628 ~

PROJECT # : 04-430
DRAWN BY : TP
DATE : 3/23/06

FRANK J. MINERVINI AIA  
N.J. LICENSE NO. 12576