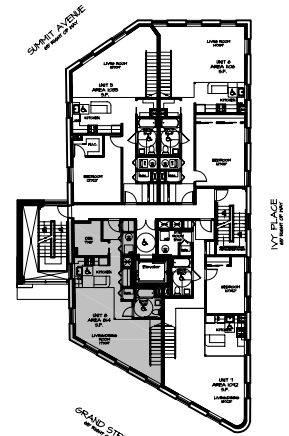
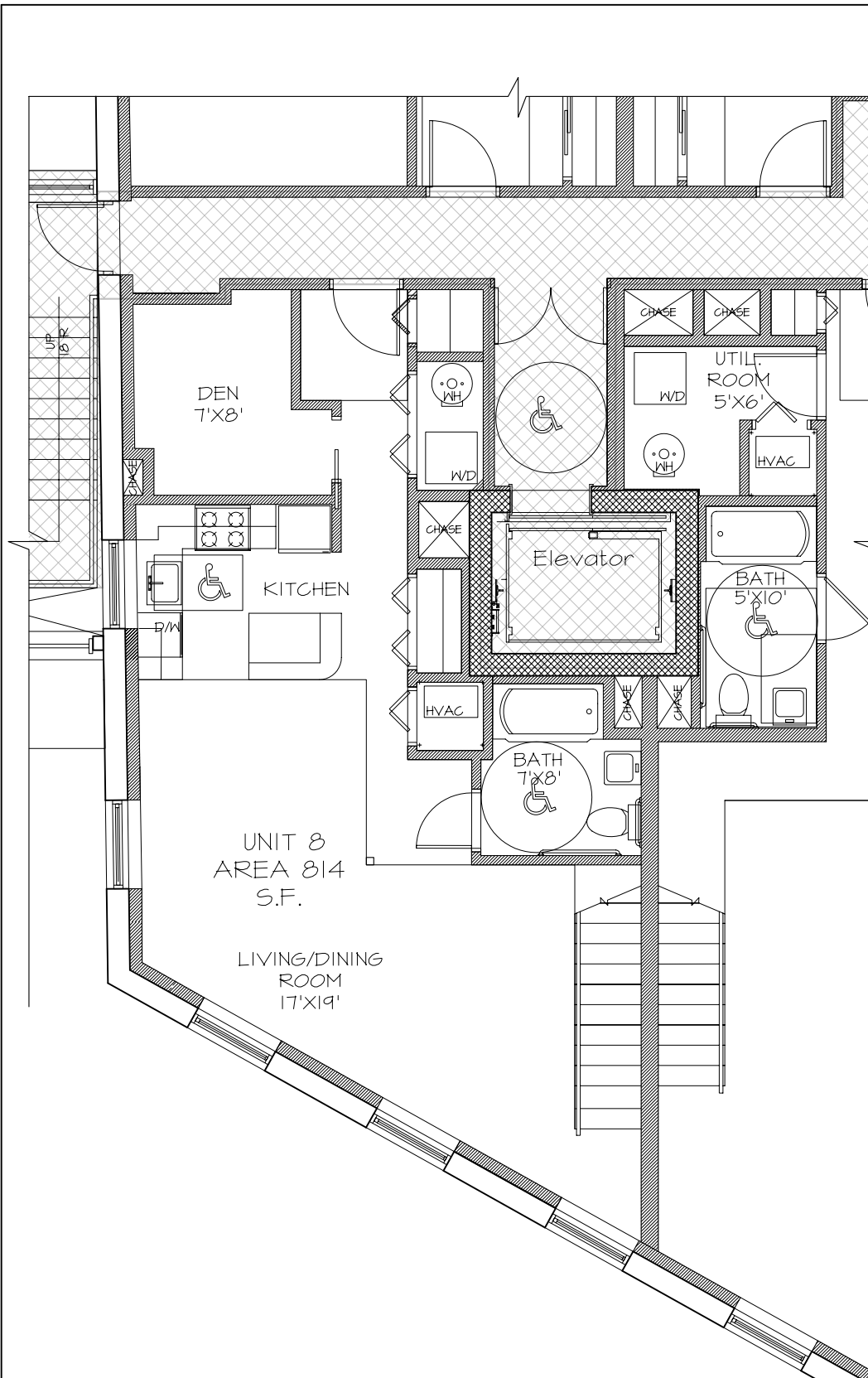


LIBRARY HALL, L.L.C.
704 GRAND STREET
JERSEY CITY, NJ



KEY PLAN
SCALE: N.T.S.



UNIT 8
SCALE: 1/8" = 1'-0"

DIMENSIONS, AREA CALCULATIONS, AND EXACT CONFIGURATIONS MAY DIFFER SLIGHTLY DUE TO FIELD VARIATIONS. PURCHASERS SHOULD VERIFY CONFORMITY BETWEEN REPRESENTED UNIT AND ACTUAL UNIT.



3RD FLOOR
UNIT 8
AREA 814 S.F.

704 GRAND STREET, JERSEY CITY, NJ

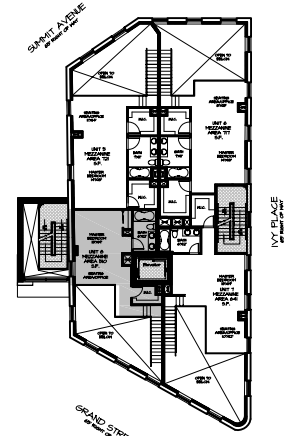
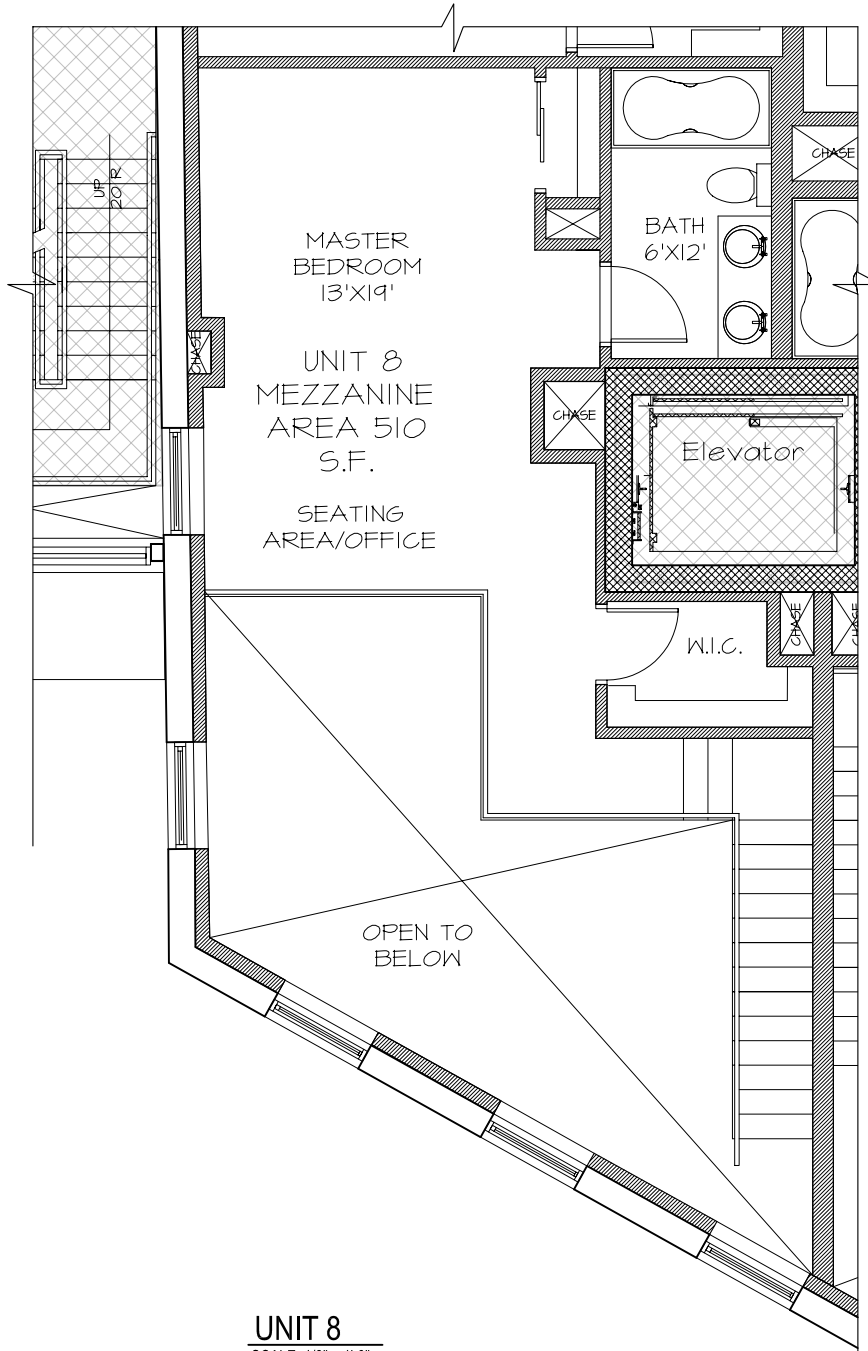
Minervini - Vandermark
Architecture

~ 401 Jefferson Street, Hoboken NJ 07030 ~ Ph. 201.386.0637 Fax. 201.386.0628 ~

PROJECT # : 04-430
DRAWN BY : TP
DATE : 3/23/06

FRANK J. MINERVINI AIA
N.J. LICENSE NO. 12576

LIBRARY HALL, L.L.C.
704 GRAND STREET
JERSEY CITY, NJ



KEY PLAN
SCALE: N.T.S.

UNIT 8
SCALE: 1/8" = 1'-0"

DIMENSIONS, AREA CALCULATIONS, AND EXACT CONFIGURATIONS MAY DIFFER SLIGHTLY DUE TO FIELD VARIATIONS.
PURCHASERS SHOULD VERIFY CONFORMITY BETWEEN REPRESENTED UNIT AND ACTUAL UNIT.

	COMMON AREA
	LIVING AREA

4TH FLOOR
UNIT 8 MEZZANINE
AREA 510 S.F.

704 GRAND STREET, JERSEY CITY, NJ

Minervini - Vandermark
Architecture

~ 401 Jefferson Street, Hoboken NJ 07030 ~ Ph. 201.386.0637 Fax. 201.386.0628 ~

PROJECT # : 04-430
DRAWN BY : TP
DATE : 3/23/06

FRANK J. MINERVINI AIA
N.J. LICENSE NO. 12576